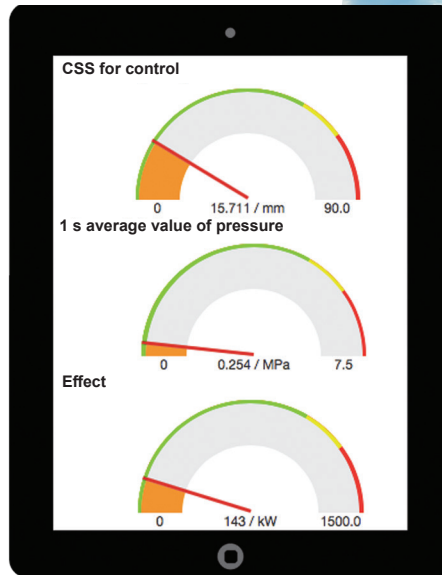


Roctim Cloud

Connected machines
saves crusher data to
the cloud and enable
powerful analysis



PART OF ROCTIM'S
PRODUCT AND SYSTEM SOLUTIONS



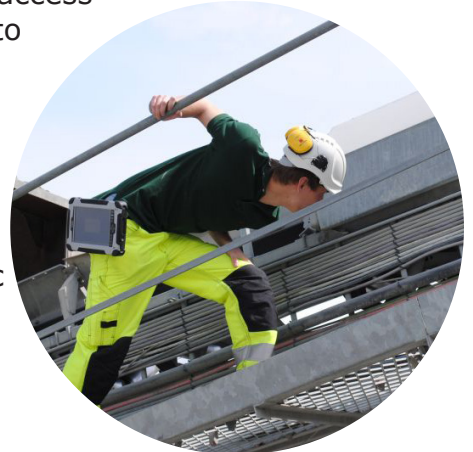
Roctim Cloud

- ✓ Information is automatically saved to the cloud
- ✓ Automatic reports and KPIs
- ✓ Example data: effect, pressure & tonnage
- ✓ Powerful analytical tool



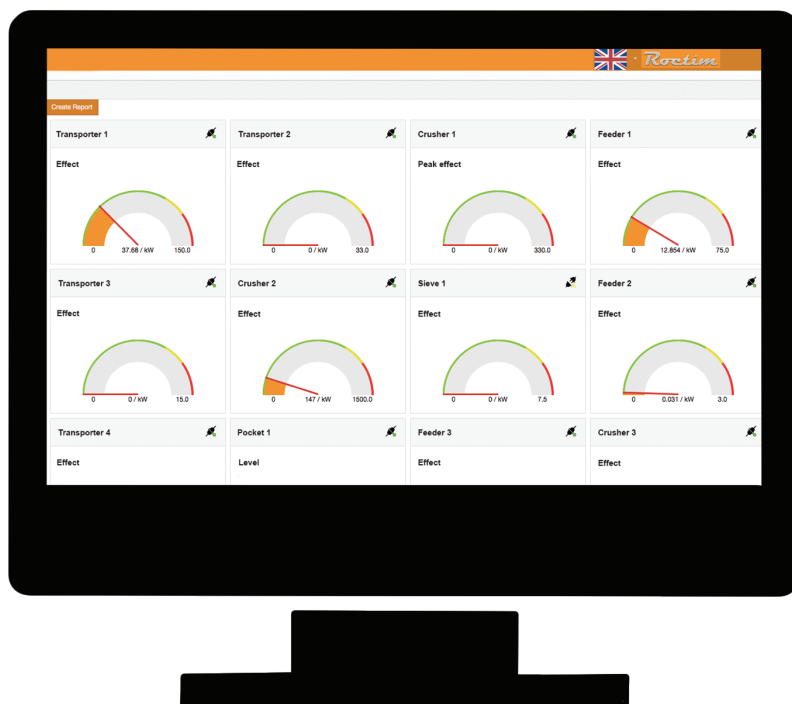
The cloud service *Roctim Cloud* is a powerful tool that gives you access to crusher data online, in real time. Data is automatically saved to the cloud through modem and PLC and enables monitoring the performance of the machines without having to be physically present.

Roctim Cloud is a tool created with user friendliness in mind, to meet the needs for you who works with crushing daily. It is also possible to extend and customize the system to suit your specific operations.

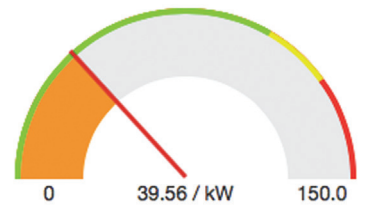


- ✓ Continuous download and storing of data from the site
- ✓ Export of data such as csv, xml, pdf among else
- ✓ Historical trends based on stored data; for example effect, pressure and tonnage
- ✓ Evaluation of data and calculation of KPIs presented in a report
- ✓ Information in real time about the machines and the process is always shown on roctimcloud.com

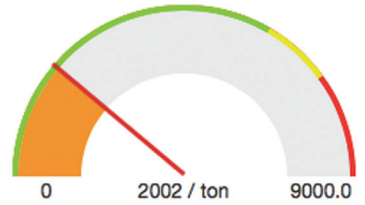




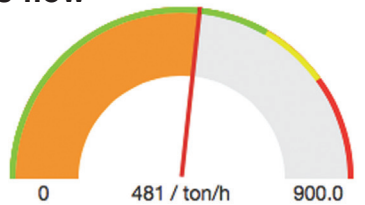
Effect



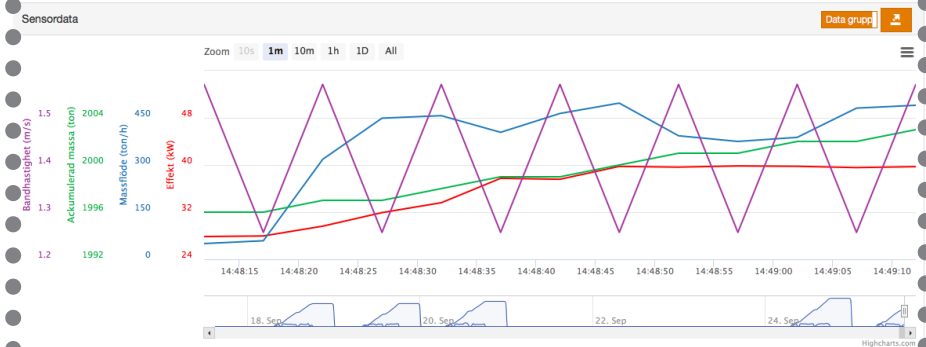
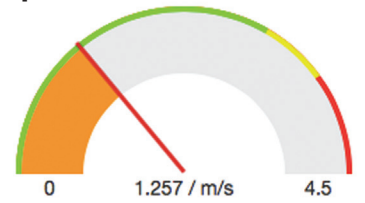
Accumulated mass



Mass flow



Belt speed



Via the web application the machines can be monitored and historical data exported

Roctim's cloud solution works very well together with our CCU (Crusher Control Unit) Base, which offers an advanced protection against overload and maximizes the production.

To send and store data in the cloud the *Connect* is used, a robust communication unit with integrated wifi, 3G-modem and antenna. Ethernet cables enable long distances between the Connect unit and the network, hence the unit can be placed where the coverage is strongest. Roctim's Connect is thus very suitable for communication between the site and the cloud service.

Technical details

Downloading frequency: 1/5 Hz

Resolution, data: 1/5 Hz

Depth: High resolution data is saved at least two months

Long term data: After two months the data is recalculated to averaged minute values and saved for at least one year.

Protocol: Modbus TCP



Roctim's CCU Base and connect unit



Remote support

When installing our automation and control systems, we have the possibility to install a remote online connection to the Roctim headquarter. This means that one of our application engineers easily is available for your service if questions or problems occur. We can connect to our control systems and perform updates as well as troubleshoot and fix most of the problems this way. Something that greatly reduces downtime in your process.



Crushing consultancy expertise

From many years of experience in the field of ballast and mining with a close connection to the latest research in crushing we can ensure that our improvement work results in increased profitability. We together discuss your plant and needs, identify areas for improvement and propose relevant solutions. We perform simulations to guarantee that your process produces as sought and to investigate possible rebuilds or to take measures that ensures that the plant produces the right materials. Such measures include increased measurements, control and regulation.



The cloud service Roctim Cloud is a powerful tool that gives you access to crusher data online, in real time. Data is automatically saved to the cloud via modem and PLC and you can monitor the machines' performance without being physically present. Through the web application the connected machines on site can be monitored and historical data can be analyzed and exported.



www.roctim.com
info@roctim.com +46 703 149 224
Hugo Grauers Gata 11a
SE 411 33